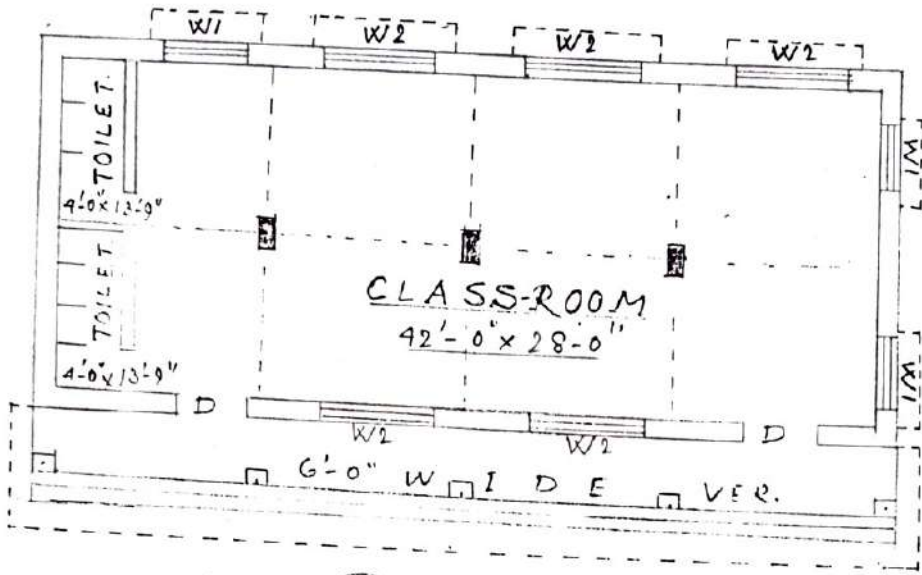
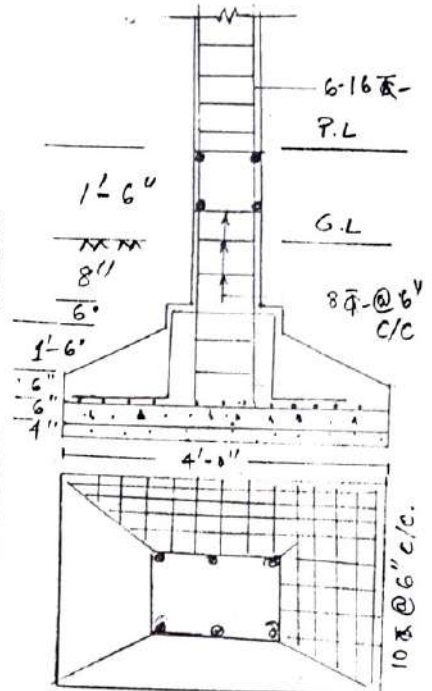


PROPOSED CLASS ROOM BUILDING PLAN OF ITACHUNA GOVT.
SPONSORED PRIMARY TEACHER'S TRAINING INSTITUTE.
P.O. ITACHUNA, DIST-HOOGHLY.

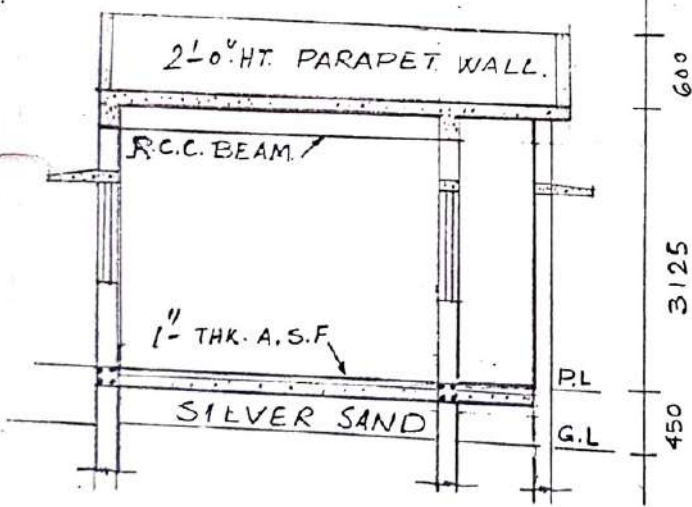


PLAN

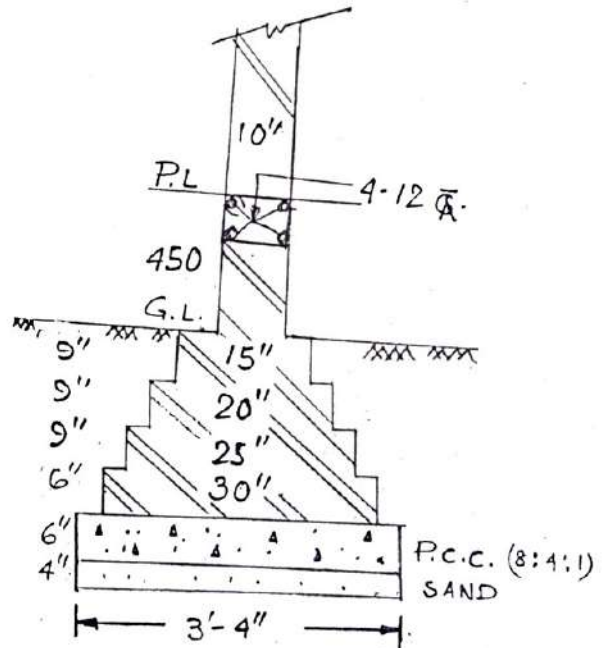
W1 = 4'-0" x 6'-0"
W2 = 5'-0" x 6'-0"
D = 6'-6" x 4'-0"



DETAILS OF R.C.C. COLUMN



SECTION N-ON A-A'



DETAILS OF BRICK FOUNDATION

Drawn by: H. P. Deb Nath
Civil Engineer
Sapta gram, Hooghly.

Swagata Roy
Sub Assistant Engineer
Hooghly Zilla Parishad

Swagata Roy
Teacher-in-charge
Itachuna Govt. sponsored Primary
Teachers' Training Institute
P.O. Itachuna Hooghly

Attested
Swagata Roy
23.10.08

Teacher-in-charge
Itachuna Govt. sponsored Primary
Teachers' Training Institute
P.O. Itachuna, Hooghly